

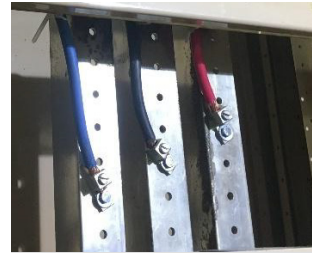
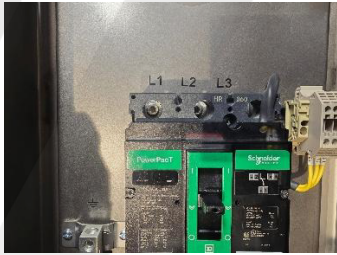
CV6 or CV7 Stainless Steel Enclosure Pre-Wired Breaker Kit Wiring Instructions

1. Remove lid and mount enclosure using appropriate fasteners for application.
2. Cut an appropriate size hole to enter cabinet depending on the wire gauge size required for your application.
3. Use 1 of the 4 pre-made 2" port holes provided to mount the enclosure on either the cabinet directly or an adjacent wall. Port position used will depend on mounting position whether that be directly on cabinet or adjacent wall. Use appropriate Chase nipple, Offset nipple or Connectors for your specific installation.

(Both Sides, Top & Back)



4. Connect/terminate Ground wire to Ground Lug using minimum #6 Copper Green jacketed conductor (Case bond and discharge under catastrophic event). A Ground resistance meter check is advised to ensure that grounding resistance is less than 10 ohms.
5. A Minimum #6 to 1/0 AWG Copper jacketed conductor for phase leads. Use largest conductor possible for application.
6. All Wire connections should be kept as short as possible (No Loops). Should not exceed 12'. At 12' length largest gauge conductor should be used.
7. Use of Inhibitor, Pin Connectors or Large Ferrules on all termination points when using stranded wire is strongly recommended and always good wiring practice.
8. Ground & all 3-phases are clearly marked within enclosure on the back plate. As CV device is already configured on breaker please connect directly to bus system. Examples below of connections made on bus. Applications will vary based on bus Configuration/Type. Compression fittings are preferred.



9. Instructions for Auxiliary port to provide notification of breaker tripping is included in your package. 1/2" port access hole is provided to facilitate.

ANY QUESTIONS CALL 1-855-526-2765

