

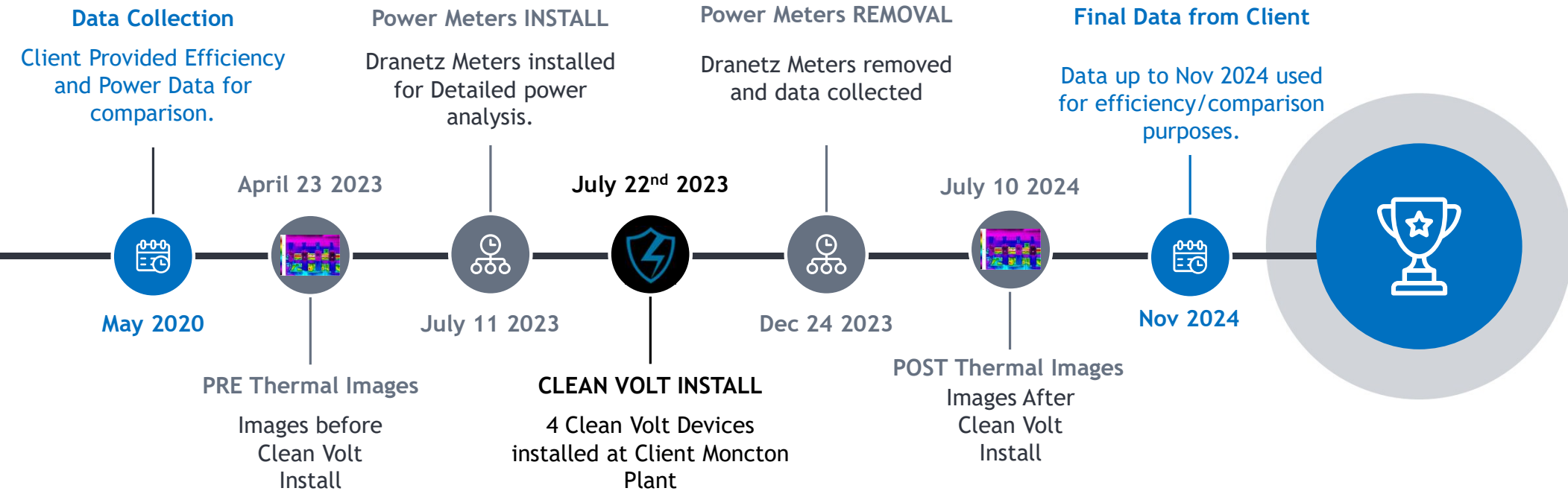
Amiko Client Clean Volt Install on Blow Mold Section



Clean Volt

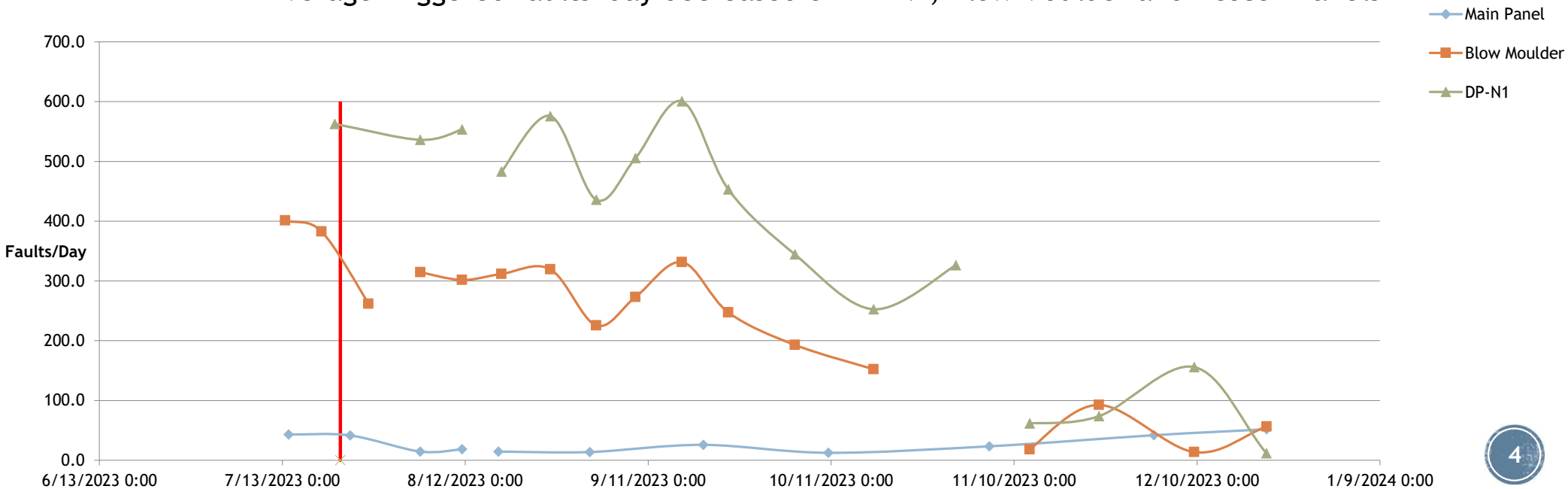
- Power Quality Enhancement Tool
- 4 Devices currently installed at Amiko Moncton Client
 - Main Panel, Blow Mould Panel, Descon Panel, DP-N1 Panel
- Benefits of Clean Volt
 - 1. Reduced component failure (Power Faults)**
 - Dissipates Over-Voltage events
 - Reduce overall number of power faults
 - Improved Power Factor
 - Improve Power Correction
 - Reduced Neutral V rms
 - Lower Maintenance costs
 - Reduce Emergency Downtime
 - 2. Reduced Excess Heat on Components**
 - Thermal Images taken Before/After Clean-Volt Install
 - 3. Correction of power usage and \$ Savings**
 - Power correction to start approx. 3 months after install

Clean Volt Project **TIMELINE**



Reduced Component Failure

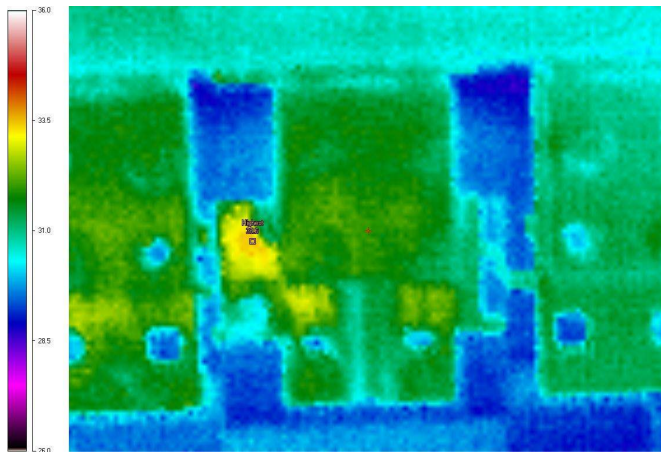
- 4 Clean-Volt devices installed week of July 22nd 2023
- Dranetz Power Logging Meters installed in early July 2023
- After 2 months, Overall logged power faults were drastically reduced
 - Triggered faults include Voltage Sags, Voltage Interruptions, Voltage Swells and Voltage Transitions
 - Average Triggered faults/day is calculated on each meter
 - Average Triggered faults/day decreased on DP-N1, Blow Moulder and Descon Panels



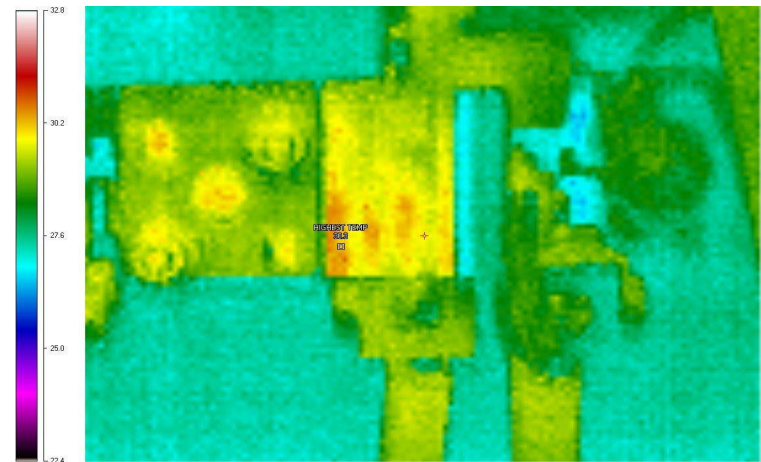
Reduced Excess Heat on components

- Clean-Volt is known to attract the excess heat on electrical components and dissipate it.
- Lower number of electrical power faults also reduces excess heat.
- PRE Clean-Volt Thermal Images taken April 23rd 2023 (Before)
- POST Clean-Volt Thermal Images taken July 10th 2024 (After)
 - July 10th 2024 was very warm.
- Most Thermal Images taken after Clean-Volt install show lower max temperatures.

Pre: Main Panel Buss Bar 1 Max 33.6 C



Post: Main Panel Buss Bar 1 Max 30.3 C




Énergie NB Power

 Service delivered to/ Service livré à
 Summary of Charges/Sommaire des frais

Amount due last month/ Montant dû du mois dernier	16,527.64
Less payment - Thank you/ Moins le paiement - Merci received on Oct 25, 2024/ reçu le 25 oct. 2024	-16,527.64

 Your balance/ Votre solde 0.00
**Current charges for Oct 03, 2024 - Nov 05, 2024
Frais courants du 03 oct. 2024 au 05 nov. 2024**

Charges for electricity you used/ Vos frais d'utilisation d'électricité	
on the first 35560 kilowatt-hours you used pour les 35560 premiers kilowatt-heures utilisés	@ 16.29 ¢ / kWh 5,792.72
on the additional 71540 kilowatt-hours you used pour les 71540 autres kilowatt-heures utilisés	@ 7.70 ¢ / kWh 5,508.58

 Variance account amount for electricity you used
Montant du compte d'écart pour l'électricité consommée 396.27

 * Billing demand charge/ Frais de puissance 355.6 kw @ 8.41/ kw 2,990.60
 HST/ TVH #11924 6924 2,203.23
Amount due/ Montant dû \$ 16,891.40

* Billing demand is the greater of the maximum kW demand or 90% of the maximum kVA demand in the billing period.

* Puissance de facturation est la valeur la plus élevée des valeurs suivantes : l'appel de puissance maximal en kW, ou 90 % de l'appel de puissance maximal en kVA, pour la période de facturation.

Continued on next page/ Suite à la prochaine page

Your electricity bill

 Votre facture
d'électricité

 Your account number
Votre numéro de compte
6496759 - 7

 Bill date/ Date de facturation
Nov 08, 2024/ 08 nov. 2024

 Bill number/ Numéro de facture
6530922095

 Rate category/ Catégorie de tarif
Small Industrial/ Industriel petite puissance

 Meter number/ Numéro du compteur
1003920

 Your electricity use this period
Électricité consommée pendant la période
Meter reading on Nov 05, 2024

 Relevé du compteur au 05 nov. 2024 2606

 Previous reading/ Relevé précédent -2487

 Difference/ Différence 119

 Multiplier/ Multiplicateur x 900

 Equals current use of
Soit une utilisation de 107100 kWh

 Your electricity use at a glance
Aperçu de votre utilisation d'électricité

Meter read date Date de relevé du compteur	Billing days Jours de facturation	Electricity Électricité (kWh)	Demand Puissance (kW)
--	---	-------------------------------------	-----------------------------

Nov/ nov. 05, 2024	34	107100	355.6
--------------------	----	--------	-------

Oct/ oct. 02, 2024	27	100800	366.9
--------------------	----	--------	-------

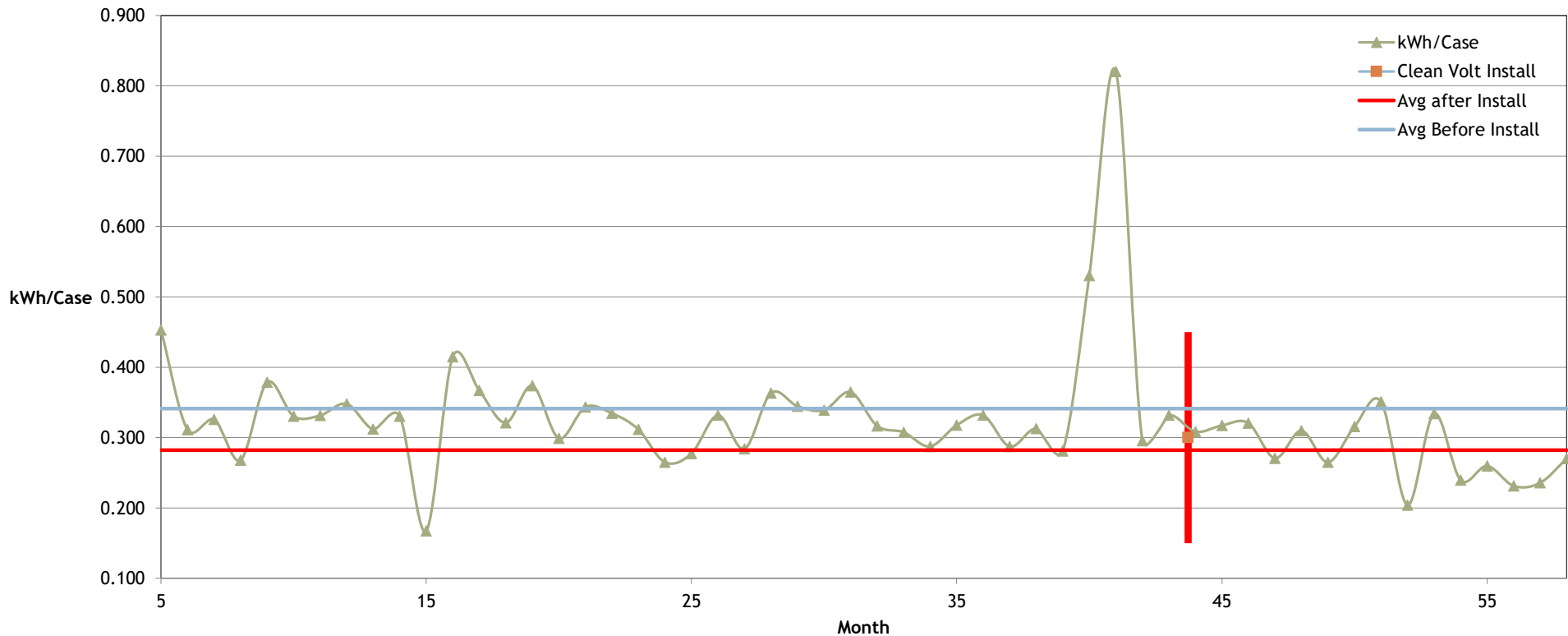
Nov/ nov. 06, 2023	34	83700	369.4
--------------------	----	-------	-------

Power Bill

1. Calculated savings are based on the additional kWh used billed at 7.70 cents/kWh.
2. Power bills kWh usage is what was used for all pre/post clean volt savings.
3. The amount of kWh billed at the higher rate of 16.29 cents/kWh is based on the maximum demand (kW). This max demand has only decreased by 1.8% since the clean volt instal. We will assume no change in max demand and only calculate savings based on additional kWh used.
4. The max demand (kW) is also billed at 8.41\$/kW. This kW billing is also not used in the calculated savings with clean volt.


2020 to Nov 2024 kWh/Case


- The Avg kWh/Case before clean volt install is 0.341 kWh/Case. Based on data from May 2020 to July 2023
- The Avg kWh/Case after clean volt install is 0.282 kWh/Case. Based on data from Aug 2023 to Nov 2024
- Avg kWh/Case after clean volt install shows a power savings of 17%, or 0.059 kWh/Case.




Production Line Savings from supplied data

- kWh/product is based on client provided data
 - Power usage is based on the monthly NB Power bill
 - Monthly # of product is based on the Filler Count Final product
- Energy Peak demand (kW) only seems to be reduced slightly (1.8%) with clean volt.
- With an average product production of 389,269 unit/month since clean volt install, 0.059 kWh/unit savings and 0.077\$ billed per additional kWh (Oct 2024), this gives an average monthly savings of \$1771 (pre-tax), \$2,037 (after-tax).
- With an average monthly power bill of \$16,263 since clean volt install, the calculated savings represent an after-tax savings of 12.5% per month.

 0.059 kWh/Case


 2037 \$ /Month

 12%/Month \$ savings


 Monthly Power Savings **17%**

Main Entrance estimated Savings

- Using the Calculated savings from the Blow Mold Entrance and Production Line production numbers, we have a calculated monthly after-tax savings of 12.53%
- The average monthly power bill on the main entrance from Jan 2022 to Nov 2024 is \$44,790.
- If Clean-Volt is as effective on the main entrance as the Blow Mold entrance, estimated Savings would be approximately \$5,600 / month or \$67,200 / year.
- We also expect to see a similar reduction in power faults and maintenance costs once clean volt is installed on the main Entrance and all sub panel services down-line.

 5,600 \$ / Month

 Reduced Power Faults & Maintenance \$

 67,200 \$/Year

Explanation of the technology (From Clean Volt)

Once the Clean Volt units are installed to a service and turned on, they immediately start attracting *Current Surges* that are produced within the system by load cycling, CEMF from the motors, and Harmonic distortion created by electronics. These current surges are dissipated through heat on our technology and are only sent to ground during a rare catastrophic event where our technology can no longer keep up to dissipating the heat. Before Clean Volt is installed these current surges compound the Eddy currents in the electrical signal over time, which leads to the skinning effect in conductors and create an oversaturation of the magnetism in motors and transformers resulting in a build up of resistance in the system. The loads connected must fight resistance in order to draw the power they are requesting. In other words: “Current surges create heat; heat leads to resistance in the system resulting in overconsumption”. We have found that depending on the loads involved and the length of conductors in the system, the improvement in consumption can take 30 – 90 days depending on these above factors. It takes time for these effects of poor power quality to have a negative impact on consumption, it also takes time to work out these negative impacts as we have to remove the culprit (Current surges) and allow time to address the built-up residual Eddy Currents (skinning effect & over saturation) in order to correct the efficiency of the system.

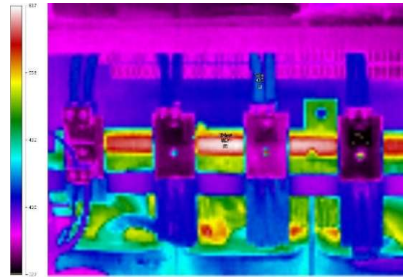
Please note that our technology in a WYE configured system is constantly monitoring the Neutral in addition to the phases. Therefore, it is common to see a result of lower levels or noise on the neutral as this activity is being arrested out of the system and dissipated off as heat (This is not RMS current but rather produced Current surges in the system). You will see the same results with the neutral on a before & after time plot posted on our website from a previous Dranetz test. [Before & After | Clean Volt](#)



CONCLUSION



- Lower # of Power faults
- Less Overheating
- Lower Maintenance \$
- Equipment protection
- Power Correction



- Longer Equipment Life
- Less Downtime
- More Efficiency
- Power/\$ Savings
- Power Correction

Production Line (Blow Mold) Calculated Savings

- 17% energy kWh monthly savings on power bill
- Averaging \$2,037 or 12% / month
- Equipment and Labor cost\$34,899.00
- Equipment ROI is 17 months

12%
ROI 17

Main Entrance Estimated Savings

- Savings Averaging \$5,600 or 12% / month
- Equipment and Labor cost\$158,218.00
- Equipment ROI is 28 months

12%
ROI 28